



The Bridge Home was originally born out of the of the Aftercare program established in 1993, in which Prison Fellowship volunteers met ex-offenders upon release and helped them re-enter the community. Those who were mentored had a significantly reduced recidivism rate. Those who were isolated and “on the streets” tended to fall into old ways of surviving. The Bridge Home provides a more structured and orderly transition with emphasis on meeting the spiritual needs of the men.



Bridge Home Resident Dorms

SUPPORT THE BRIDGE HOME

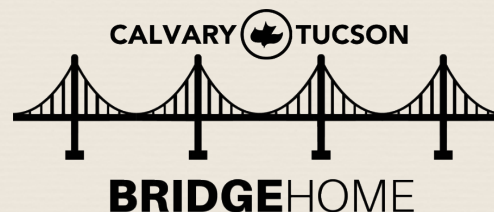
Your prayers and support for Christian Prison Ministries (DBA The Bridge Home) are greatly appreciated.

Christian Prison Ministries is a 501(c)(3) non-profit organization and all donations are tax-deductible. Christian Prison Ministries is also an approved Qualifying Charitable Organization under the Arizona Department of Revenue, and as such Arizona taxpayers are eligible for direct tax credits.

You may donate securely on our website at bridgehomecalvarytucson.com and print your receipt, or mail checks or money orders to the address below.

5170 S Julian Drive Tucson, AZ 85706

520-573-9933 extension 109
bridgehome@calvarytucson.com



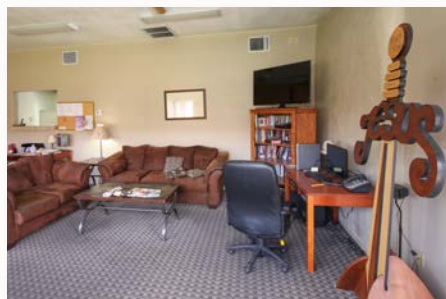
“Remember those in prison as if you were their fellow prisoners, and those who are mistreated as if you yourselves were suffering.”

— Hebrews 13:3

Bridge Home Mission Statement

To empower inmates to successfully transition from incarceration back into the community and the local church through Biblical discipleship and assistance with practical life needs.





Bridge Home Resident Dining & Common Rooms



Bridge Home Resident Dorms & Facility

CALVARY TUCSON BRIDGE HOME

The Bridge Home provides practical help and spiritual direction in a supportive home environment for men who have demonstrated a desire to follow the Lord Jesus and begin a new life, both spiritually and practically outside prison walls.



The Bridge Home facilitates the transition from prison back into the community by providing room and board in a structured living environment. Men stay at the Bridge Home for generally 3-12 months. We provide assistance in finding employment as well as getting plugged into a local Christian church.

The recidivism rate in America (the rate at which people return to familiar thinking and criminal behavior) has long been at an unacceptable level. We believe that the life-changing power of Jesus can drastically impact these rates for men who come to faith in Christ and have the proper encouragement, education, spiritual direction and personal disciplines in place. The combination of these components shore up their faith and commitment to real, lasting change.

Our holistic approach is founded on the basic Christian view that people are created as a whole being: body, soul, and spirit. We are physical, social, intellectual, emotional, moral, and spiritual beings. Food, housing, and employment are a necessary start to a successful transition from prison, but part of the vision at the Bridge Home is to equip men to practice *thinking differently* about life, faith, personal significance, community, family, and work from their own Christian perspective. Our worldview is, of course, informed by the Bible. Thus, Bible studies and “Celebrate Recovery” groups (a distinctively Christian 12-step approach to addiction recovery) are a weekly part of the required schedule at the Bridge Home. In addition, we come alongside the residents to assist and educate in areas like budgeting, conflict resolution, healthy decision-making principles, work ethics, the importance of community, and other values and practical life skills needed to be successful, both personally and in the community.